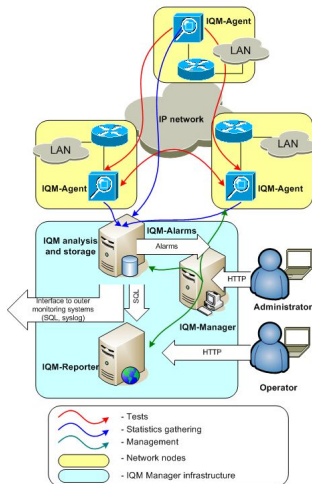


IQM: the functional composition

Written by Максим

Wednesday, 31 March 2010 13:33 - Last Updated Tuesday, 16 November 2010 14:32

Functional composition of the IP Quality Monitor system could be seen here.



There are two main elements: IQMA (Agents) and IQMM (Managers).

Agents: There are special network appliances used for quality measurements, which are located in the main network nodes. They are small computers running IQMA software, and are called *probes* or *agents*. Agents automatically (on demand or on schedule) run tests between them (agents) and measure delivery parameters losses, delay (RTT), variation (jitter) and bandwidth. Gathered data is then pre-processed, stored in text files and delivered to higher level –

Manager. IQM Manager is the brain of IQM system, providing agent management, data processing and analysis, user interface. IQMM provides:

- IQMA agents management:
- Policy configuration
- Threshold management

IQM: the functional composition

Written by Максим

Wednesday, 31 March 2010 13:33 - Last Updated Tuesday, 16 November 2010 14:32

- Test by schedule configuration
- Test by demand configuration

- IQMM (lower level managers) management for distributed systems
- Automated processing of acquired data:
 - Export of data to SQL DB
 - Data reduction and pre-processing for storage
 - Data storage
 - Data analysis and consistency checks

- Data violation signalization
- Stats graphing and user interface